

OUTDOOR BURNING



LRAPA TITLE 47:
OUTDOOR
BURNING IN
LANE COUNTY



LRAPA

Lane Regional Air Protection Agency

TABLE OF CONTENTS

Contact Information	2
What is Outdoor Burning?	3
Burns That Require Permits	4-5
Burns That Do Not Require Permits	6-7
Burning Requirements	8
Urban Growth Boundary	9
Urban Growth Boundary or City Limits?	10
Coastal Lane County	11
Burning Requirements for Eugene City Limits	12
Burning Requirements for Eugene UGB	13
Burning Requirements for Springfield City Limits & Springfield UGB	14
Burning Requirements for Affected Fire Districts	15
Burning Requirements for Oakridge	16
Burning Requirements for Florence	17
Burning Requirements for Lowell	18
Burning Requirements for All Other Areas	19

CONTACT INFORMATION

LRAPA Office: 541-736-1056

Burning Advisory Line: 541-726-3976

Coastal Burning Advisory Line: 541-997-1757

Website: www.lrapa.org

Whenever possible, choose other ways to dispose of yard, construction, demolition, and land-clearing debris. Chipping, composting, and hauling to local wood waste recyclers are alternatives. Check with your local garbage hauler about the availability of curbside yard debris pick-up, or call:

Lane County Waste Management: 541-682-4119

Rexius Recycling Center: 541-342-1835

Lane Forest Products: 541-345-9085



WHAT IS OUTDOOR BURNING?

Outdoor, or open/backyard burning, is defined by the Lane Regional Air Protection Agency as all burning conducted outdoors in open areas or other make-shift devices.

LRAPA regulates outdoor burning in Lane County to minimize impacts of smoke on residents and in the local airshed. LRAPA has an Outdoor Burning Program to let people know if and when outdoor burning is allowed in their areas. The regulations may differ depending upon location, local city and county ordinances, and LRAPA rules. Some municipalities ban burning or limit burning to spring/fall seasons, but the restrictions vary from area to area. Local fire districts may enforce further limitation on burn seasons, such as delaying the start or suspending the season pending fire danger.

LRAPA regulates most outdoor burning within the county, with the exception of agricultural burning, forest slash burning permitted by the Oregon Department of Forestry or US Forest Service, and fire department training burns.

BURNS THAT REQUIRE PERMITS

Below is a list of the types of burning that LRAPA regulates. Some require LRAPA-issued letter permits prior to burning, while others do not. Additionally, some burns require local fire department authorization.

CONSTRUCTION/DEMOLITION/LAND CLEARING

Burning materials that are generated by removal of debris, logs, trees, or brush from any site being prepared for development; wood waste from a construction project; or wood waste resulting from complete or partial destruction of any man-made structure.

COMMERCIAL

Burning woody, vegetative, or dimensional wood debris actually generated or used by a commercial operation. This includes pallets and materials removed and transported from property of origin.



INDUSTRIAL

Burning woody waste produced as a direct result of any manufacturing or industrial process.

BONFIRES

Burning woody materials in a controlled outdoor fire held for celebratory, ceremonial, or entertainment purposes. A fire is considered a bonfire if it is larger than three (3) feet in diameter and two (2) feet in height.

A form to request a permit for one of these burns can be found on the LRAPA website at www.lrapa.org. The form can be found under the “Request for Outdoor Burning Evaluation” page, located in the Outdoor burning section of the website.



BURNS THAT DO NOT REQUIRE LRAPA PERMITS

MAY REQUIRE FIRE DEPARTMENT PERMIT

RESIDENTIAL OUTDOOR BURNING

The burning of woody yard debris that has been generated around a dwelling. Residential outdoor burning is regulated on a daily basis, you must check the daily advisory before burning. The outdoor burning of grass clippings is prohibited county wide. Burning of fallen leaves is also prohibited in the city limits of Junction City, Coburg, Cottage Grove, Creswell, Lowell, Westfir, Dune City, and Veneta, as well as within the urban growth boundary of Eugene and Springfield. Yard debris transported from property of origin becomes commercial waste. Contact local fire department for permitting requirements.

Woody Yard Debris refers to tree branches and brush.



RECREATIONAL FIRE

Burning a small fire no larger than three (3) feet in diameter and two (2) feet in height using manufactured fire logs or clean, dry, natural firewood as fuel. This is limited to campfires, fires in chimineas, patio fireplaces, fire pits or other similar devices on private property or in designated areas on public land. No construction, demolition, commercial, yard, or trash may be burned.



RELIGIOUS CEREMONIAL

Burning legal materials in a controlled outdoor fire that is integral to a religious ceremony or ritual. If larger than three (3) feet in diameter and two (2) feet in height, a LRAPA letter permit and fire department authorization are required.

OUTDOOR BBQ



Burning with a fire fueled with cut and split firewood that is sized proportionally to the amount of food being cooked. See pages 12 through 18 for more information or check with your local city or county office for restrictions in your area.

BURNING REQUIREMENTS

Below is a list of requirements for outdoor burning in Lane County. Failure to comply with these rules can result in fines.

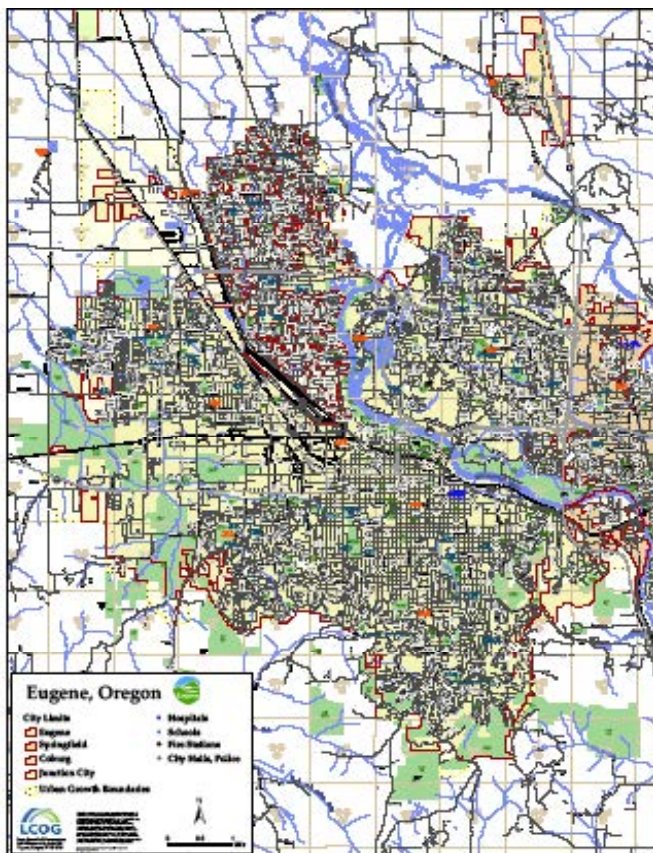
- Attend the fire at all times.
- Follow the daily start and stop burning times. Stop time is defined as the time the fire is required to be fully extinguished.
- Burn only dry, loosely stacked debris, free of dirt, rocks, and other non-combustible materials.
- Have water and tools available for controlling or extinguishing the fire.
- Outdoor burning in barrels is prohibited.
- Materials prohibited from being burned include garbage, plastics, grass clippings, wire insulation, asbestos-containing materials, automobile parts, asphalt, petroleum by-products, tires, cardboard, clothing, grass clippings, petroleum-treated materials, chemically-treated wood, rubber products, animal remains, or animal or vegetable matter related to any food service or preparation, or any other material which normally emits dense smoke, noxious odors, or hazardous air contaminants.



URBAN GROWTH BOUNDARY (UGB)

Every incorporated city in Lane County has an urban growth boundary, also known as a UGB. UGBs encompass city limits and the area surrounding city limits to account for future population growth. Eugene, Springfield, and Oakridge all have UGBs. Burning regulations may differ in the UGB, as opposed to within city limits.

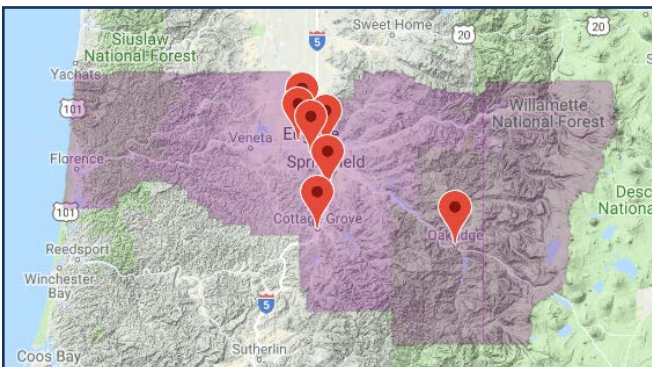
To check if your home is in city limits or the urban growth boundary, visit the Lane Council of Governments' website at www.lcog.org.



NOT SURE IF YOU LIVE IN THE UGB OR THE CITY LIMITS?

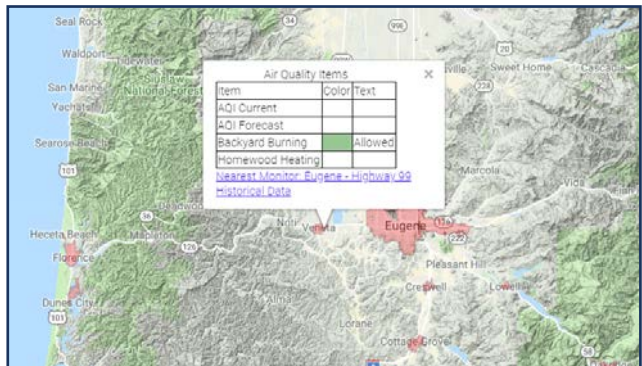
There is a map on the LRAPA website that will show the UGB boundaries, city limits, and county limits. The map displays LRAPA's seven air monitoring stations. It can tell you the air quality data and advisories from the monitor closest to your home. Please visit:

<http://www.lrapa.org/216/Todays-Current-Air-Quality>



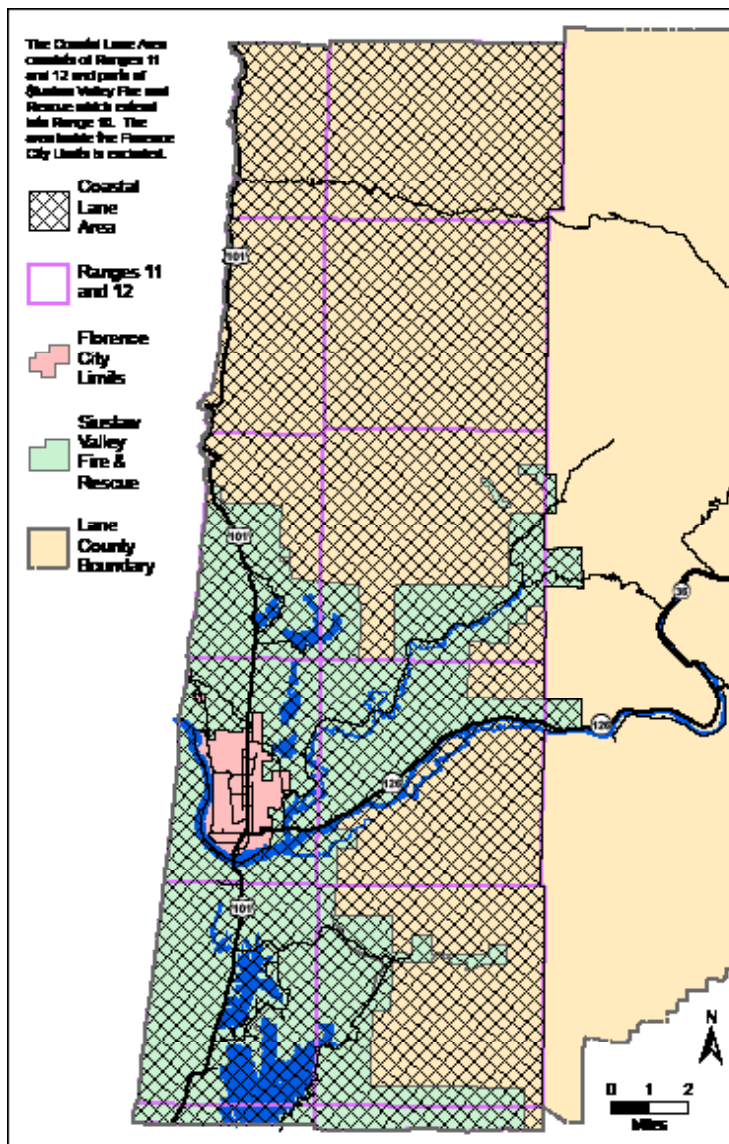
Left:
LRAPA's map, showing the Lane County boundary and the location of the air monitoring stations.

Right:
LRAPA's map, showing the city limits within Lane County and local air quality data from a chosen location.



COASTAL LANE COUNTY

Not sure if you live in coastal Lane County? Refer to the map below.



BURNING RULES FOR EUGENE CITY LIMITS

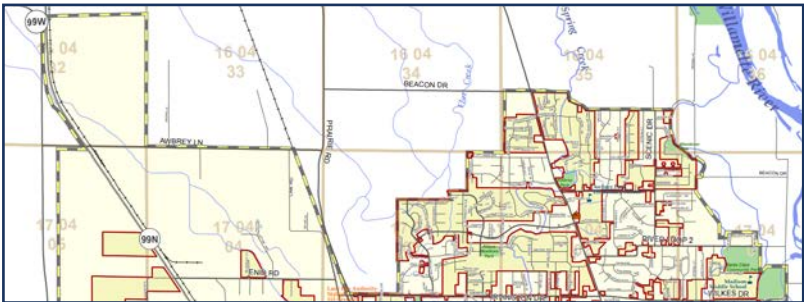
TYPE OF BURN	RULES
Residential Outdoor Burning	Prohibited by City ordinance and LRAPA Section 47-015(2)(b).
Construction/ Demolition Outdoor Burning	Prohibited by City ordinance and LRAPA Section 47-015(3)(a).
Commercial Outdoor Burning	Prohibited by City ordinance and LRAPA Section 47-015(4)(a).
Industrial Outdoor Burning	Prohibited by City ordinance and LRAPA Section 47-015(5)(a).
Recreational Fires	Prohibited except for an outdoor fire with the fire in a fireplace, barbecue set, or an open outdoor fire used for cooking only. Eugene code 6-200.
Bonfires	Authorization from local fire district and letter permit from LRAPA required.
Religious Ceremonial Fires	Contact local fire agency.



For a complete map of the city of Eugene, visit: <http://www.lcog.org/DocumentCenter/View/1287/Eugene-Base-Map-PDF>

EUGENE URBAN GROWTH BOUNDARY

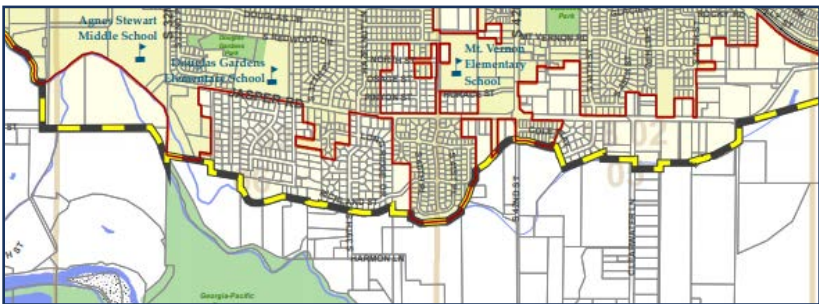
TYPE OF BURN	RULES
Residential Outdoor Burning	Prohibited on lots less than two acres in size. Woody yard trimmings may be burned on approved burn days during the burning season — October 1 through 31 and March 1 through June 15.
Construction/ Demolition Outdoor Burning	Prohibited by City ordinance and LRAPA Section 47-015(3)(a).
Commercial Outdoor Burning	Prohibited by City ordinance and LRAPA Section 47-015(4)(a).
Industrial Outdoor Burning	Prohibited by City ordinance and LRAPA Section 47-015(5)(a).
Recreational Fires	Contact local fire district. Not allowed on yellow or red HWH advisory days from October 1 to May 31.
Bonfires	Authorization from local fire district and letter permit from LRAPA required.
Religious Ceremonial Fires	Contact local fire agency.



For a complete map of the Eugene UBG, visit: <http://www.lcog.org/DocumentCenter/View/1287/Eugene-Base-Map-PDF>

SPRINGFIELD CITY LIMITS AND UGB

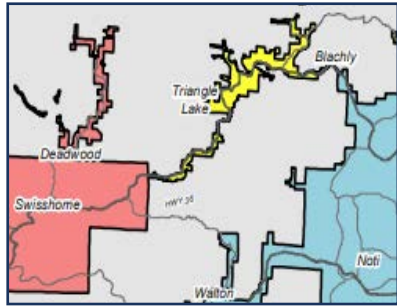
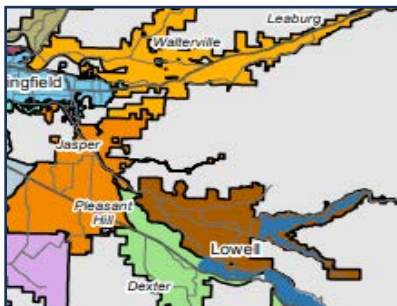
TYPE OF BURN	RULES
Residential Outdoor Burning	Prohibited on lots less than one-half acre in size. Woody yard trimmings may be burned on approved burn days during the burning season — October 1 through 31 and March 1 through June 15.
Construction/ Demolition Outdoor Burning	Prohibited by LRAPA Section 47-015(3) (a).
Commercial Outdoor Burning	Prohibited by LRAPA Section 47-015(4) (a).
Industrial Outdoor Burning	Prohibited by City ordinance and LRAPA Section 47-015(5)(a).
Recreational Fires	Contact City of Springfield Fire Department. Not allowed on yellow or red HWH advisory days from October 1 to May 31.
Bonfires	Authorization from local fire district and letter permit from LRAPA required.
Religious Ceremonial Fires	Contact local fire agency.



For a complete map of the city of Springfield and the UGB, visit: <http://www.lcog.org/DocumentCenter/View/1323/Springfield-Base-Map-PDF>

INSIDE AFFECTED FIRE DISTRICTS IN LANE COUNTY, EXCLUDING EUGENE AND SPRINGFIELD UGB, LOWELL AND FLORENCE CITY LIMITS

TYPE OF BURN	RULES
Residential Outdoor Burning	Burning of woody yard trimmings allowed on approved burn days during the burning season — October 1 thru June 15. LRAPA Section 47-015(2)(h). (All outdoor burns inside Siuslaw Valley Fire & Rescue need a permit from the fire department).
Construction/ Demolition Outdoor Burning	Allowed with letter permit issued from LRAPA and fire department approval during the burn season – October 1 thru June 15.
Commercial Outdoor Burning	Allowed with letter permit issued from LRAPA and fire department approval during the burn season – October 1 thru June 15.
Industrial Outdoor Burning	Allowed with letter permit issued from LRAPA and fire department approval during the burn season – October 1 thru June 15.
Recreational Fires	Contact local fire agency.
Bonfires	Authorization from local fire district and letter permit from LRAPA required.
Religious Ceremonial Fires	Contact local fire agency.



For a complete map of all affected fire districts in Lane County, visit: <http://www.lcog.org/DocumentCenter/View/1480/Lane-County-Fire-Districts-11x17-PDF>

OAKRIDGE CITY LIMITS AND UGB

TYPE OF BURN	RULES
Residential Outdoor Burning	Burning of woody yard trimmings allowed with permit on approved burn days during the burning season — October, March, April, May. LRAPA Section 47-015(2)(f).
Construction/ Demolition Outdoor Burning	Allowed with letter permit issued from LRAPA and fire department approval during the burn season — October, March, April, May.
Commercial Outdoor Burning	Allowed with letter permit issued from LRAPA and fire department approval during the burn season — October, March, April, May.
Industrial Outdoor Burning	Allowed with letter permit issued from LRAPA and fire department approval during the burn season — October, March, April, May.
Recreational Fires	Allowed unless prohibited by the City during HWH advisory days October 1-May 31. Contact local fire district
Bonfires	Allowed with letter permit issued from LRAPA during the burn season October 1 thru October 31, and March 1 – June 15.
Religious Ceremonial Fires	Contact local fire agency.



For a complete map of the city of Oakridge and the UGB, visit: <http://www.lcog.org/DocumentCenter/View/1320/Oakridge-Base-Map-PDF>

FLORENCE CITY LIMITS

TYPE OF BURN	RULES
Residential Outdoor Burning	Prohibited by City ordinance and LRAPA Section 47-015(2)(e).
Construction/Demolition Outdoor Burning	Prohibited by City ordinance.
Commercial Outdoor Burning	Prohibited by City ordinance.
Industrial Outdoor Burning	Prohibited by City ordinance.
Recreational Fires	Prohibited except for outdoor recreational fires used for cooking with fire in a fireplace, barbecue set; or an outdoor fire ring or pit fueled with cut and split firewood.
Bonfires	Prohibited by City ordinance.
Religious Ceremonial Fires	Contact local fire agency.



For a complete map of the city of Florence, visit: <http://www.lcog.org/DocumentCenter/View/1290/Florence-Base-Map-PDF>

LOWELL

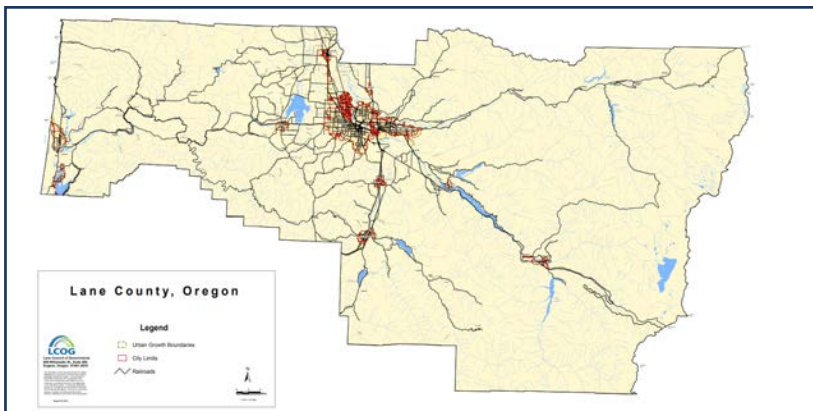
TYPE OF BURN	RULES
Residential Outdoor Burning	Burning of woody yard trimmings allowed with permit on approved burn days during the burning season — October, March, April, May. LRAPA Section 47-015(2)(g).
Construction/Demolition Outdoor Burning	Prohibited by City ordinance.
Commercial Outdoor Burning	Prohibited by City ordinance.
Industrial Outdoor Burning	Prohibited by City ordinance.
Recreational Fires	Prohibited except for outdoor recreational fires used for cooking with fire in a fireplace, barbecue set; or an outdoor fire ring or pit fueled with cut and split firewood.
Bonfires	Authorization from local fire district and letter permit from LRAPA required.
Religious Ceremonial Fires	Authorization from local fire district and letter permit from LRAPA required.



For a complete map of Lowell, visit: <http://www.lcog.org/DocumentCenter/View/1310/Lowell-Base-Map-PDF>

ALL OTHER AREAS

TYPE OF BURN	RULES
Residential Outdoor Burning	Burning of clean wood and yard debris is allowed on approved burn days during the burning season – October 1 thru June 15. LRAPA Section 47-015(2) (i).
Construction/Demolition Outdoor Burning	Burning of approved materials is allowed during the burn season – October 1 thru June 15.
Commercial Outdoor Burning	Allowed with letter permit issued from LRAPA during the burn season – October 1 thru June 15.
Industrial Outdoor Burning	Allowed with letter permit issued from LRAPA during the burn season – October 1 thru June 15.
Recreational Fires	Contact local fire district.
Bonfires	Authorization from local fire district and letter permit from LRAPA required.
Religious Ceremonial Fires	Contact local fire agency.



For a complete map of all other areas in Lane County, visit: <http://www.lcog.org/DocumentCenter/View/1297/Lane-County-Base-Map-No-Grid-PDF>

FOLLOW LRAPA ON SOCIAL MEDIA



**Lane Regional Air
Protection Agency**



@LaneRegionalAir



LRAPA
Lane Regional Air Protection Agency

**1010 Main Street,
Springfield, OR 97477
541-736-1056
www.lrapa.org**