



LRAPA
Lane Regional Air Protection Agency

ANNUAL REPORT 2023

Lane Regional Air Protection Agency

541-736-1056

www.LRAPA.org

1010 Main St.

Springfield, OR

TABLE OF CONTENTS

What is LRAPA?	3
Report Highlights	4
Board of Directors	5
Citizen Advisory Committee	5
Staffing & Agency Departments	6
Budget & Finances	7
FY'2022-2023 Budget Committee	7
Permitting.....	8
Additional Operations.....	9
The 2023 Wildfire Season.....	10
Air Monitoring.....	11
2023 Ozone Data.....	12
2023 Particulate Matter 2.5 Data, Wildfire Data Included	13
2023 Particulate Matter 2.5 Data, Wildfire Data Excluded	14
2023 Particulate Matter 10 Data, Wildfire Data Included	15
2023 Particulate Matter 10 Data, Wildfire Data Excluded	16

WHAT IS LRAPA?

Vision:

Community partners working together to ensure cleaner air for everyone



The Lane Regional Air Protection Agency (LRAPA) stands as Oregon's sole local air authority, safeguarding Lane County's air quality since 1968 (*Oregon DEQ regulates all air quality outside Lane County*). In partnership with Eugene, Springfield, Cottage Grove, Oakridge, and Lane County Government, LRAPA offers a responsive and local Agency where community voices inform air quality decisions.

LRAPA's impact is clear: despite significant population growth, Lane County's air quality has consistently improved. By enforcing federal standards, implementing state programs, and fostering local initiatives and partnerships, LRAPA ensures all of Lane County meets National Ambient Air Quality Standards (NAAQS) established by the Clean Air Act, and implements Oregon's statewide air toxics program Cleaner Air Oregon.

From asbestos abatement to pioneering air toxics assessments, LRAPA proves that local action and partnership yields powerful results for those that call Lane County home.

LRAPA's Mission: To protect public health, quality of life, and the environment as a leader and advocate for the continuous improvement of air quality in Lane County



2023 REPORT HIGHLIGHTS

The Lane Regional Air Protection Agency (LRAPA) navigated transition in Executive Leadership in 2023. Despite the changes, LRAPA's staff and Board remained committed to our mission to improve air quality in Lane County and are proud of successfully accomplishing the following:

“LRAPA never faltered in our commitment to serving our community.”

- 1. Permitting:** LRAPA managed 307 air permits in 2023, including 291 Air Contaminant Discharge Permits (ACDP), 13 Title V Federal Operating Permits, and 3 Registered Sources.
- 2. Permit Backlog:** Title V permit issuance backlog was 8%, significantly lower than EPA's goal of 20%.
- 3. Additional Operations:** The Agency handled 468 asbestos abatement notices and investigated 97% of the 587 air quality community member complaints received.
- 4. Wildfire Season:** Lane County experienced significant smoke and air quality impacts from the Bedrock Fire (31,590 acres) and Lookout Fire (25,754 acres). LRAPA issued air quality advisories for 15 days due to severe wildfire smoke.
- 5. Air Monitoring:** LRAPA utilized eight stationary monitoring sites across the county to collect over 750,000 hours of pollutant and meteorological data while also providing the community with real time air quality data.
- 6. Air Quality Trends:** Excluding wildfire data, air quality continues to remain well below targeted levels across Lane County.



BOARD OF DIRECTORS

LRAPA's nine-member Board of Directors guides the organization with ethical governance, financial oversight, and strategic planning to ensure LRAPA remains sustainable. They also ensure LRAPA's work fulfills its mission while adapting to Lane County's evolving needs.

2023 Board of Directors	
Bryan Cutchen - Chair Representing Oakridge	Howard Saxion - Vice Chair Representing Eugene
Joe Pishioneri Representing Springfield	Matt Keating Representing Eugene
Jared Hensley Representing Springfield	Dylan Plummer Representing Eugene
Mike Fleck Representing Cottage Grove	Michael Johnston Representing Eugene
	David Loveall Representing Lane County

Board members volunteer their time to LRAPA and are appointed by their respective city councils and the Lane County Board of Commissioners. Seat distribution on LRAPA's Board is representative of population size and density. 2023 membership included four seats for the City of Eugene, two for the City of Springfield, one for the City of Cottage Grove, one for the City of Oakridge, and one for Lane County.

The Board met 11 times in 2023. Meetings usually occur on the second Thursday of every month with no meetings generally scheduled in August or December. Board meetings are open to the public with an opportunity for statements at the start of each meeting.

CITIZENS ADVISORY COMMITTEE

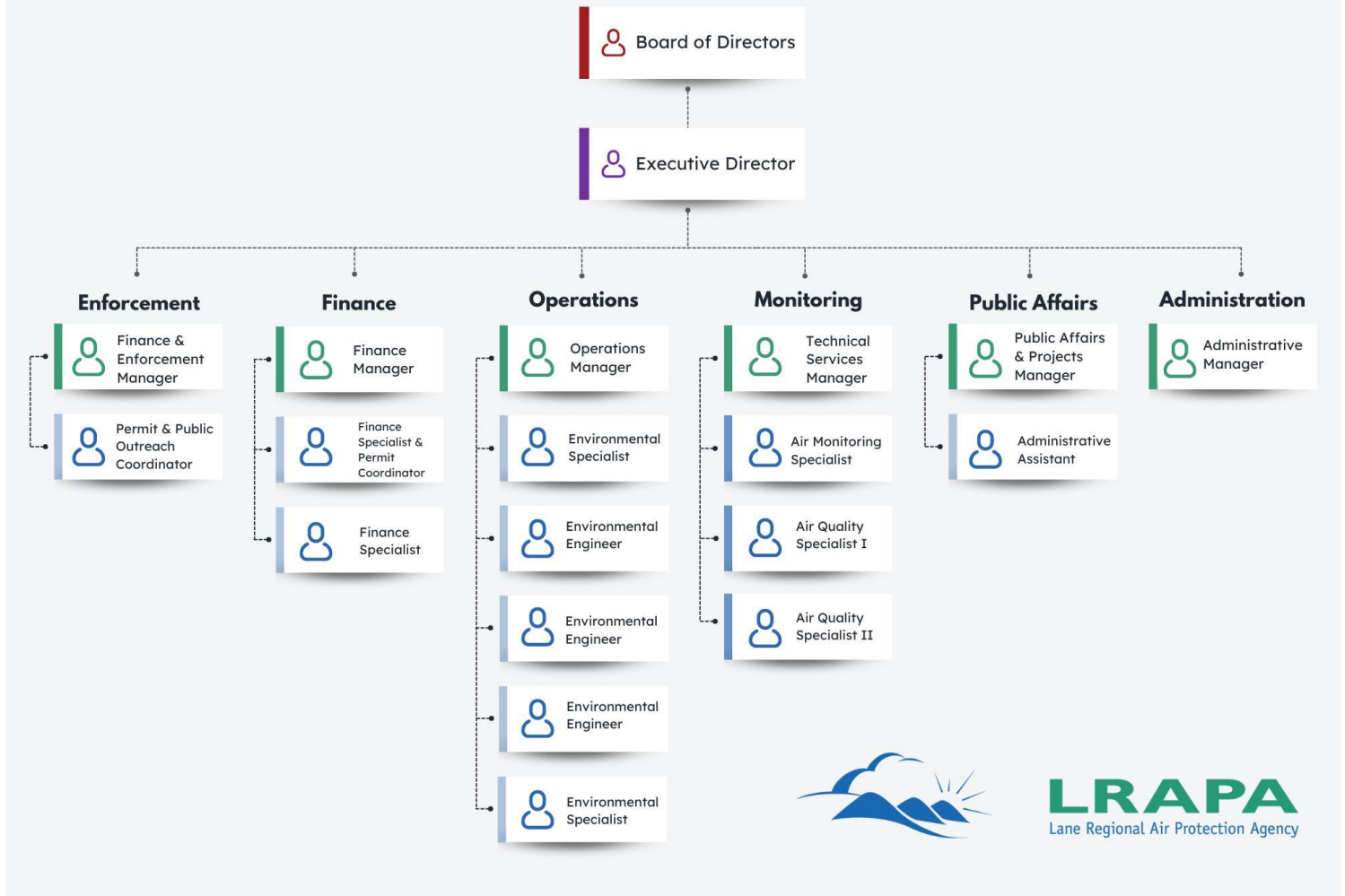
LRAPA's Citizens Advisory Committee (CAC) is comprised of a targeted group of volunteers from various industries to provide their insight on air quality topics, provide opinions or recommendations to the Board as requested, and conduct special projects assigned by the Board. There are at least seven and no more than 15 seats on the CAC with membership to include backgrounds in public health, planning, industry, agricultural, fire suppression, and general interest.

2023 Citizens Advisory Committee	
Jim Daniels - Chair Representing Large Industry	Kelly Wood - Vice Chair Representing Industry
Teresa Roark Representing Public Health	Evelina Davidova-Kamis Representing Industry
Mysti Frost Representing General Public	Chris Cline Representing Fire Suppression
Paul Metzler Representing General Public	Peter Dragovich Representing Community Planning
Vacant Representing General Public	Shane Ruddell Representing Agriculture

The CAC met 10 times in 2023. Meetings usually occur on the final Tuesday of every month with no meetings generally scheduled in August or December. These meetings are open to the public with opportunity for statements at the start of each meeting.

STAFFING & AGENCY DEPARTMENTS

Lane Regional Air Protection Agency 2024 Organization Chart



The organizational chart shown reflects changes made in May of 2024

LRAPA’s staffing has varied over the years as annual budgets were adjusted to account for economic fluctuations.

In 2008, LRAPA had the highest staffing level with 23 full-time equivalent (FTE) employees. The lowest staffing level since then was in 2014, when LRAPA had 13 FTE employees.

In 2023, LRAPA had as many as 19 FTE employees. In September of ’23, the Board changed Executive Leadership and appointed an Acting Interim-Director.

A priority in 2024 will be identifying the next Executive Director.

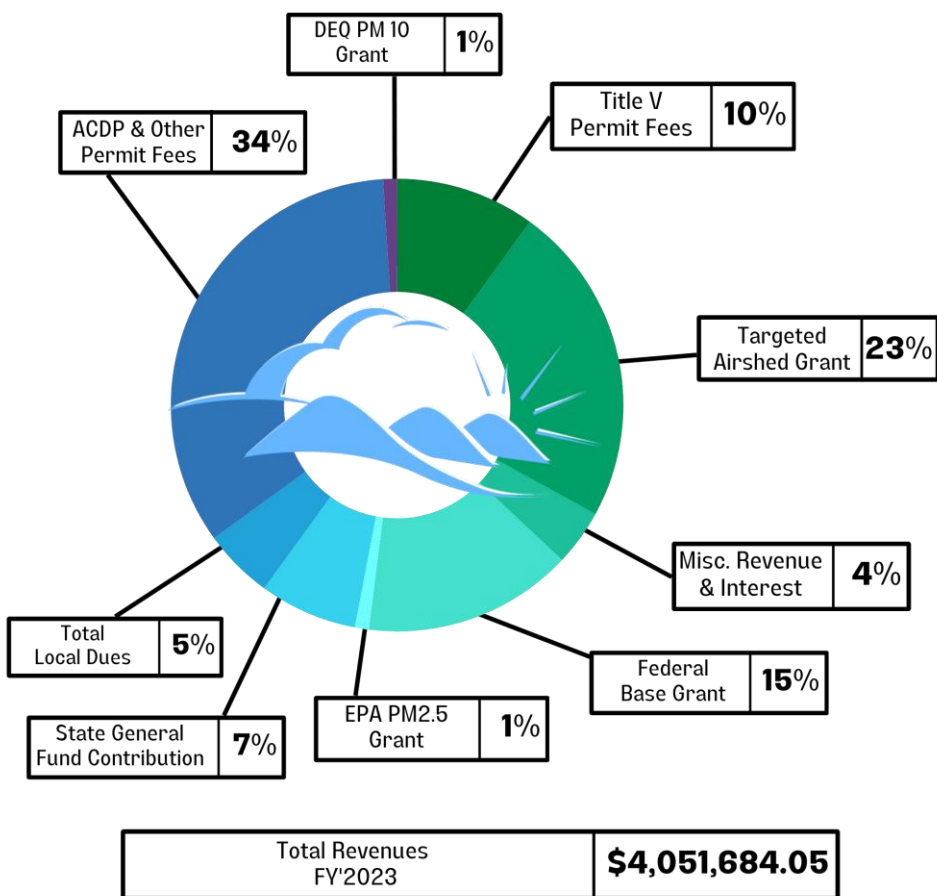
BUDGET & FINANCES

LRAPA’s operating budget for fiscal year 2023 was \$4,632,787. For FY ’23 Actual expenses were \$3,976,682.14. The budget is reviewed and set annually by the Budget Committee. This 18-member committee is made up of LRAPA’s nine Board of Directors plus nine Board-appointed citizens who represent the same jurisdiction as their Board appointee.

2023 Appointed Budget Committee	
Steve Schmunk - Chair Representing Springfield	Ruth Linoz - Vice Chair Representing Springfield
Adam Rue Representing Eugene	Robert Ball Representing Cottage Grove
Lisa Arkin Representing Eugene	Dawn Kinyon Representing Oakridge
Paul Metzler Representing Lane County	

Budget committee meetings occur in March and April of each year, with the possibility for a meeting in May, if needed. During these public meetings the committee reviews a proposed budget, ask questions, and recommends changes.

After revisions are implemented and the committee votes to approve the budget, a public hearing is scheduled to record public testimony for consideration by the Board of Directors. The Board then votes to adopt the budget. State law requires the next fiscal year’s budget to be adopted by June 30.



Despite fluctuations in funding throughout the years, LRAPA has succeeded in its mission to advocate for the continuous improvement of air quality in Lane County. The airsheds in our jurisdiction have seen significant improvement over the last decade due to LRAPA’s commitment and efforts to deliver on its mission and responsibilities to all of Lane County’s diverse communities.

PERMITTING

An important function of LRAPA in Lane County is to administer and enforce operational air permits issued to industrial and commercial businesses. LRAPA permits a variety of activities such as: wood products manufacturing, chemical products manufacturing, mineral products manufacturing, metal products manufacturing, water treatment, fuel burning, fuel transfer operations, coating operations, and other sources of toxic air pollutants. LRAPA's Rules and Regulations are in alignment or more stringent than federal and state rules and regulations.

Title V Operating Permits & Air Contaminant Discharge Permits (ACDPs)

In 2023, 307 sources held an LRAPA air permit; of those 291 were Air Contaminant Discharge Permits (ACDP), 13 were Title V Federal Operating Permits, 3 were Registered Sources, and 109 were gasoline dispensing facilities accounting for 36% of all ACDPs. Because LRAPA is local, we can provide timelier and more tailored service to regulated sources and we maintain a lower permitting backlog.



Above: LRAPA Staff during a facility inspection.

Issuance, Renewals & Inspections

LRAPA issued or renewed 26 air permits in Lane County in 2023. 9 air permits received a modification to their air permit. Agency officers inspected 125 commercial or industrial facilities over the year.

Looking Ahead to 2024

Operational staff will focus on maintaining the low level of the Title V permit backlog and ACDP backlog in 2024, as well as calling more facilities into Cleaner Air Oregon, Oregon's air toxics regulatory program.

Permit Backlog

In 2023, LRAPA operational staff were successful in reducing the Title V permit issuance backlog to 8% — which is significantly lower than the EPA's goal of 20%. Thanks to our team's hard work processing and issuing permits we can better serve our community and stakeholders.



Above: International Paper Facility in Springfield, a Title V operating permit holder

ADDITIONAL OPERATIONS

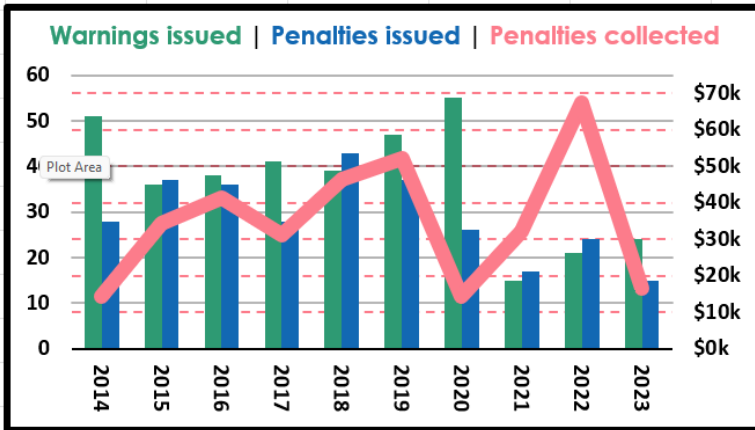
Asbestos

LRAPA’s asbestos permit and inspection program handles hundreds of abatement notices per year. To legally remove asbestos, an asbestos survey must be conducted by an accredited inspector prior to commencing a building demolition or remodel. A proper permitting notice needs to also be filed, and the removal or abatement of asbestos conducted following the criteria outlined in title 43 of LRAPA’s Rules.

Enforcement

LRAPA can initiate enforcement in instances of industrial or commercial air permit violations, illegal outdoor burning activities, improper handling or transport of asbestos-containing materials, failure to obtain necessary air permits prior to construction or operation of equipment, exceeding

2023 Asbestos Notices	
Schools	18
Residences	254
College	29
Industry	4
Commercial	117
Other	46
Total	468
Asbestos Inspections	
Total	91
Asbestos Fees Received	
Total	\$201,256.50



opacity limits from woodstoves and chimneys,

and burning prohibited materials. The dollar amount of penalties collected annually does not reflect the penalties assessed or settled during the year due to pending cases and collections received on previous years’ penalties. Money collected from penalties is transferred to Lane County’s General Fund.

Complaints

One of the most unique services LRAPA provides to Lane County residents is our complaint response. LRAPA receives, records, and investigates air quality complaints. Complaints can be made on our website, over the phone, or via email. LRAPA’s works hard to provide robust, involved, and timely responses to air quality complaints.

Air quality complaints range in categories. The three most common air quality complaint categories in 2023 were outdoor burning, industry, and miscellaneous.

LRAPA investigated 97% of the 587 air quality complaints received in 2023.

Air Quality Complaints 2014-2023										
Year	14	15	16	17	18	19	20	21	22	23
Dust	14	25	32	25	26	15	17	26	12	7
Ag/Field Burning	4	12	9	1	0	6	2	7	2	3
General Air Quality	30	15	20	14	6	12	4	8	1	25
Home Wood Heating	121	342	130	194	126	128	74	57	67	52
Industry	127	52	58	74	50	170	100	337	198	97
Miscellaneous	57	85	164	138	66	67	59	40	102	72
Outdoor Burning	279	251	266	281	351	402	423	243	292	254
Slash Burning	7	11	26	13	24	16	12	10	6	12
Unknown	35	46	56	63	29	39	74	71	45	65
Total	674	839	761	806	678	855	765	799	725	587

THE 2023 WILDFIRE SEASON

Over the last decade, large wildfires have been increasing across the western United States. These fires are expected to become more frequent and often have a substantial impact on air quality in Lane County and surrounding areas.

Air Quality Index (AQI) Comparison:

1. Eugene area:

- **1985 to 2012:** 3 days with AQI values of Unhealthy for Sensitive Groups (USG) or worse
- **2013 to 2023:** 65 days with AQI values of USG or worse

2. Oakridge:

- **1997 to 2012:** 3 days with AQI values of USG or worse
- **2013 to 2023:** 102 days with AQI values of USG or worse

Given this significant increase in poor air quality days, LRAPA will need to devote more resources to developing strategies that keep people safe and informed during wildfire season.

The 2023 wildfire season began in mid-July and persisted well into the fall. In Lane County, the Bedrock Fire (31,590 acres) and Lookout Fire (25,754 acres) both had significant impact on our air quality. We were fortunate that the Eugene area only had 3 days of a 24-hour Air Quality Index (AQI) at or above USG. Oakridge had 12 days of a 24-hour AQI at or above USG. 6 of those days were in the category of unhealthy.

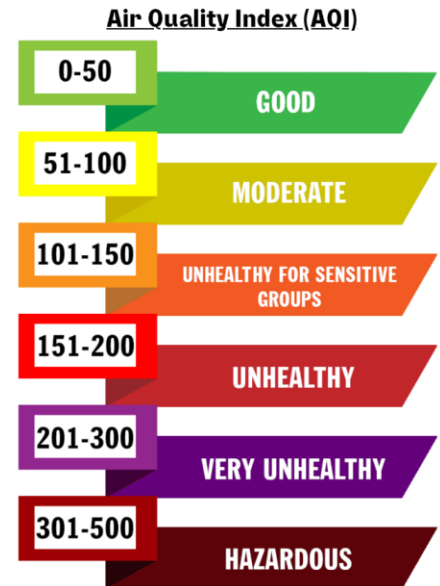
LRAPA issued air quality advisories for Lane County due to smoke intrusions from both fires. **In 2023, there were 15 days with an air quality advisory** in effect for some portions of Lane County due to wildfire smoke. LRAPA participated in numerous statewide meetings focused on air quality with state and local agencies, in addition to tri-weekly cooperators' meetings for on-the-ground wildfire suppression efforts and community response.



A helicopter flies Monday between the Bedrock Fire and nearby Fall Creek to get a load of water as the wildfire burns east of Eugene. *Chris Prietsch/The Register-Guard*

LRAPA continues to engage with federal agencies, such as the Environmental Protection Agency (EPA), National Weather Service (NWS), and the Regional Forester of the U.S. Forest Service's Pacific Northwest region, alerting and updating to the severity of measured particulate levels that create ongoing unhealthy and hazardous air quality for portions of Lane County.

LRAPA continues to participate with the workgroup hosted by the Oregon Department of Environmental Quality (DEQ) to improve smoke response between DEQ, regional National Weather Service (NWS) forecast offices, the Oregon Health Authority (OHA), the Oregon Department of Forestry (ODF), and LRAPA during wildfire season.



AIR MONITORING

One of LRAPA’s major roles is monitoring and reporting Lane County’s air quality. Through strategic partnerships and funding LRAPA operates a comprehensive network of eight stationary sites across the region, measuring various air pollutants and meteorological parameters.



Above: The air monitoring station at Amazon Park in Eugene.

Monitoring Locations:

- Three in Eugene
- One site in Springfield, Oakridge, Cottage Grove, Saginaw, and Florence

Monitoring for:

- Particulate matter
- Seasonal ozone (May – September)
- Air toxics

LRAPA collects over 750,000 hours of detailed pollutant and meteorological data each year. This ongoing data collection and analysis system provides valuable insights

into the region's air quality, enabling informed decision-making and targeted interventions to protect public health and the environment.

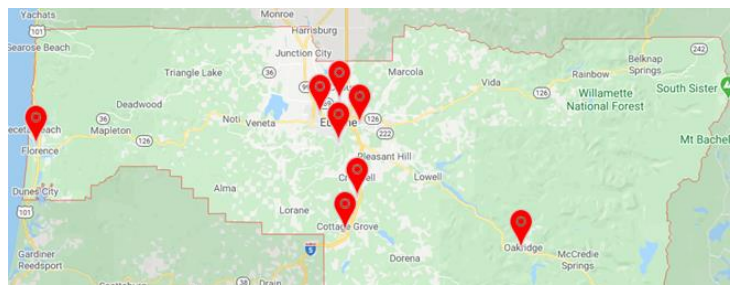


Above: Monitoring staff performing maintenance on meteorological equipment at the Springfield City Hall monitoring site.

Air Toxics Sampling

Air toxics sampling occurs at two sites in Lane County. LRAPA has partnered with the Oregon Department of Environmental Quality (DEQ) to allow for two air toxics sites by leveraging labor and equipment resources. LRAPA provides labor, initial setup, and equipment costs, while DEQ provides ongoing lab and analysis costs. This cooperative agreement allows current funding, earmarked for one air toxic site, to cover the cost and operation of two sites in Lane County.

Throughout 2023, LRAPA maintained air toxic sampling at the long-term trend site in West Eugene. The second located at the Willamette Activity Center in Oakridge. This location is ideal for better understanding air toxics pollutant profile of wildfire smoke uninfluenced by urban pollution.



Above: Regulatory air monitoring sites throughout Lane County.

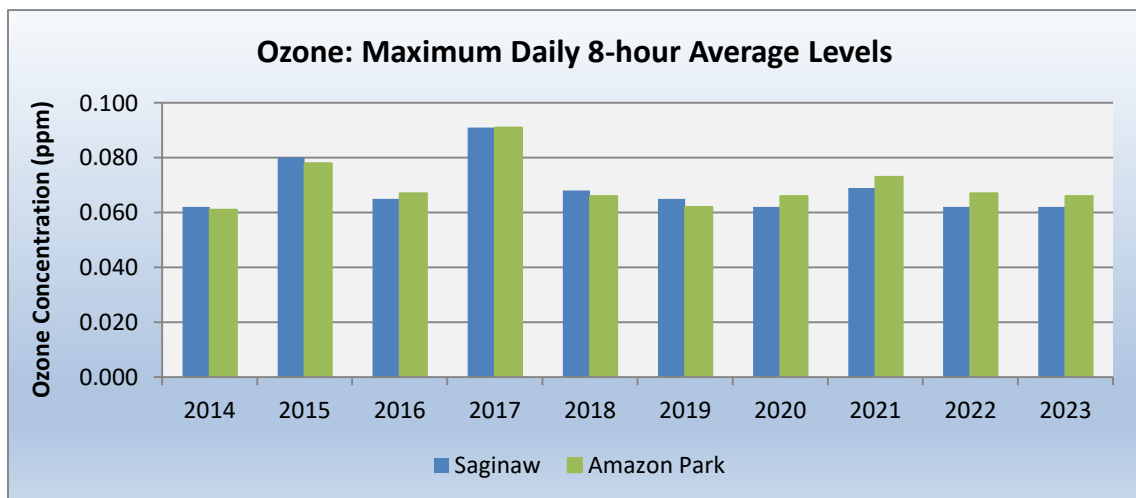
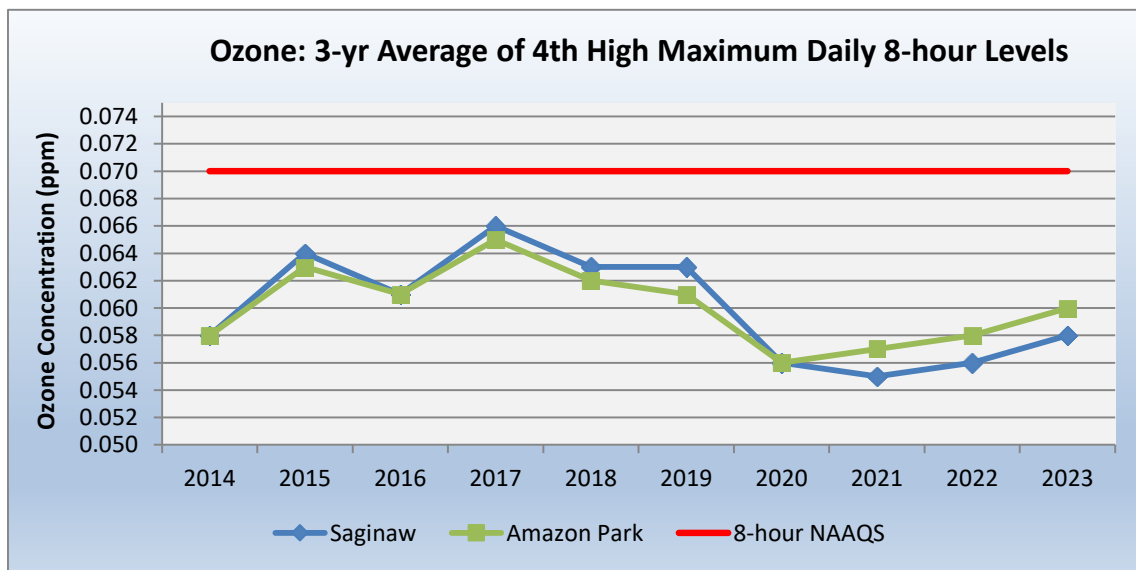
Air toxic sampling was continued in Oakridge through 2023 and will be moved to the City of Springfield in 2024.

OZONE DATA

EPA has designated the following National Ambient Air Quality Standards (NAAQS) for Ozone:

Level	Averaging Time	Description
0.070 ppm	8-hour	To attain this standard, the 3-year average of the fourth-highest daily maximum 8-hour average ozone concentrations measured at each monitor within an area over each year must not exceed 0.070 ppm. (effective October 1, 2015)

8-HOUR AVERAGE OZONE LEVELS 2014 – 2023 (ppm)											
Site Name		2014	2015	2016	2017	2018	2019	2020	2021	2022	2023
Saginaw	Maximum	0.062	0.080	0.065	0.091	0.068	0.065	0.062	0.069	0.062	0.062
	4th highest	0.058	0.071	0.056	0.073	0.061	0.055	0.052	0.060	0.056	0.060
	3-year 4th high	0.058	0.061	0.061	0.066	0.063	0.063	0.056	0.055	0.056	0.058
	# Exceedances	0	4	0	4	0	0	0	0	0	0
Amazon Park	Maximum	0.061	0.078	0.067	0.091	0.066	0.062	0.066	0.073	0.067	0.066
	4th highest	0.058	0.068	0.058	0.070	0.060	0.055	0.055	0.062	0.059	0.059
	3-year 4th high	0.056	0.059	0.061	0.065	0.062	0.061	0.056	0.057	0.058	0.060
	# Exceedances	0	3	0	3	0	0	0	0	0	0



PARTICULATE MATTER DATA – PM_{2.5}

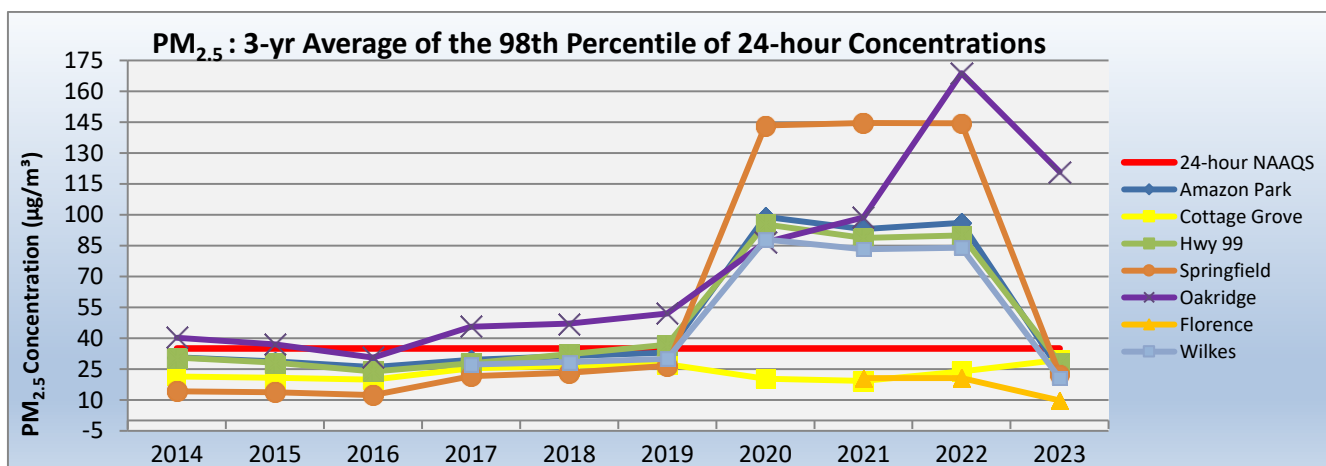
WILDFIRE DATA INCLUDED

EPA has designated the following National Ambient Air Quality Standards (NAAQS) for PM_{2.5}:

Level	Averaging Time	Description
12.0 µg/m ³	Annual (Arithmetic Average)	To attain this standard, the 3-year average of the annual mean PM _{2.5} concentrations from monitors must not exceed 12.0 µg/m ³ (effective December 14, 2012).
35 µg/m ³	24-hour	To attain this standard, the 3-year average of the 98th percentile of 24-hour concentrations must not exceed 35 µg/m ³ (effective December 17, 2006).

24-HOUR AVERAGE PM _{2.5} LEVELS 2014 - 2023 (µg/m ³)											
Site Name		2014	2015	2016	2017	2018	2019	2020	2021	2022	2023
Amazon Park	Annual mean	7.2	7.4	5.4	9.0	7.5	7.3	14.9	5.5	8.2	6.5
	Highest 24-hour	35.5	55.3	38.2	145.3	40.4	30.1	528.3	21.7	69.9	85.8
	Annual 98 th %-ile	30.7	26.7	20.3	41.6	32.0	25.3	239.5	14.1	34.6	24.4
	3 year 98 th %-ile	32	32	26	30	31	33	99	93	96	24
Cottage Grove City Shops	Annual mean	6.9	7.3	5.8	8.8	7.8	7.3	13.3	6.1	7.8	7.4
	Highest 24-hour	34.0	39.6	26.2	116.0	43.5	29.1	499.2	45.0	92.4	55.9
	Annual 98 th %-ile	21.3	20.1	18.3	37.7	23.7	20.5	16.8	20.3	34.5	33.5
	3 year 98 th %-ile	21	22	20	25	27	28	20	19	24	29
Florence*	Annual mean	---	---	---	---	---	5.8	7.7	3.8	4.3	4.0
	Highest 24-hour	---	---	---	---	---	15.3	425.3	10.2	21.9	21.5
	Annual 98 th %-ile	---	---	---	---	---	12.2	42.5	7.0	12.4	9.7
	3 year 98 th %-ile	---	---	---	---	---	---	---	21	21	10
Hwy 99 - Four Corners	Annual mean	7.2	8.0	5.7	10.9	8.7	8.0	14.9	6.6	8.8	8.3
	Highest 24-hour	43.6	56.4	18.0	330	45.6	30.9	454.2	36.9	69.8	107.4
	Annual 98 th %-ile	30.5	25.6	15.5	42.5	38.9	28.9	218.2	19.1	32.3	32.8
	3 year 98 th %-ile	30	32	24	28	33	37	95	89	90	28
Springfield City Hall*	Annual mean	6.4	6.3	4.7	12.1	6.1	6.6	21.9	6.2	4.1	5.5
	Highest 24-hour	35.6	54.0	10.4	286.8	18.2	21.0	589.3	53.2	51.6	69.6
	Annual 98 th %-ile	14.2	13.3	9.4	41.4	18.1	19.7	392.2	21.6	19.3	26.4
	3 year 98 th %-ile	15	15	12	21	23	26	143	145	144	22
Oakridge	Annual mean	10.0	8.9	6.7	13.0	9.0	9.2	14.4	9.9	23.2	10.1
	Highest 24-hour	46.1	39.3	30.7	200.0	62.0	42.0	576.6	134.3	330.4	121.9
	Annual 98 th %-ile	41.1	28.9	21.7	35.7	33.2	36.7	189.5	69.8	246.9	45.7
	3 year 98 th %-ile	40	37	31	46	47	52	87	99	169	121
Wilkes*	Annual mean	---	10.2	8.6	9.5	7.6	8.5	16.4	5.1	6.2	5.6
	Highest 24-hour	---	80.7	32.2	239.2	41.4	29.9	564.1	34.0	58.2	71.7
	Annual 98 th %-ile	---	26.8	17.8	36.9	30.4	22.7	210.9	16.0	26.3	19.6
	3 year 98 th %-ile	---	---	---	27	28	30	88	83	84	21

*non-reference method sampler, if levels approach the NAAQS, reference method sampler will be installed.



PARTICULATE MATTER DATA – PM_{2.5}

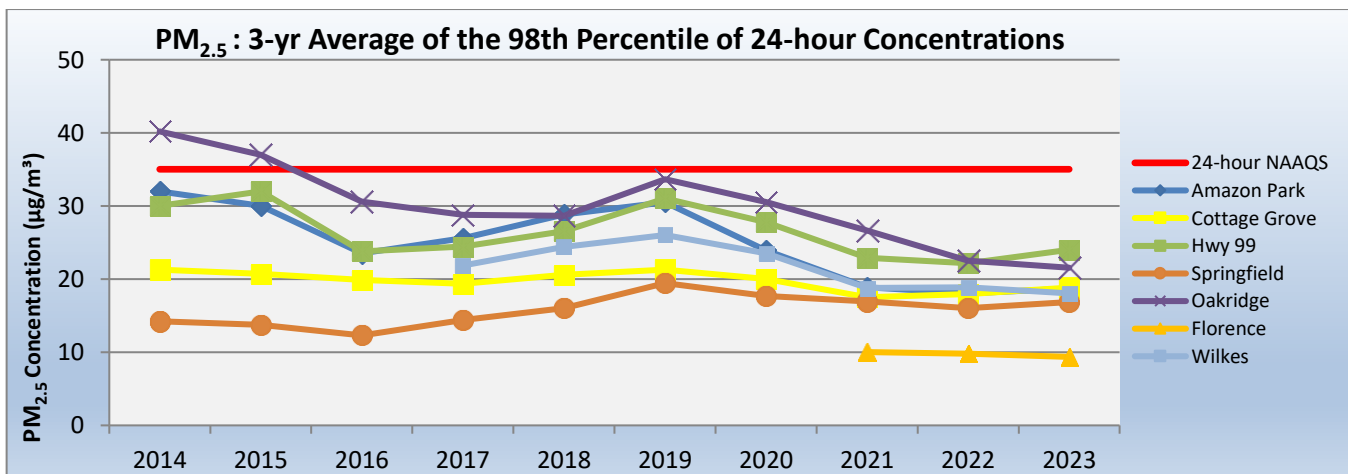
WILDFIRE DATA EXCLUDED

EPA has designated the following National Ambient Air Quality Standards (NAAQS) for PM_{2.5}:

Level	Averaging Time	Description
12.0 µg/m ³	Annual (Arithmetic Average)	To attain this standard, the 3-year average of the annual mean PM _{2.5} concentrations from monitors must not exceed 12.0 µg/m ³ (effective December 14, 2012).
35 µg/m ³	24-hour	To attain this standard, the 3-year average of the 98th percentile of 24-hour concentrations must not exceed 35 µg/m ³ (effective December 17, 2006).

24-HOUR AVERAGE PM _{2.5} LEVELS 2014 - 2023 (µg/m ³)											
Site Name		2014	2015	2016	2017	2018	2019	2020	2021	2022	2023
Amazon Park	Annual mean	7.2	7.4	5.4	7.0	7.2	7.3	5.8	5.2	6.6	5.7
	Highest 24-hour	35.5	55.3	38.2	41.6	33.8	30.1	26.2	14.1	32.0	28.5
	Annual 98 th %-ile	30.7	19.5	20.3	37.0	29.2	25.3	17.3	14.0	22.8	19.3
	3 year 98 th %-ile	32	30	24	26	29	31	24	19	18	19
Cottage Grove City Shops	Annual mean	7.0	7.3	5.8	6.8	7.5	7.3	6.1	5.9	6.4	6.4
	Highest 24-hour	34.0	39.6	26.2	27.7	25.5	29.1	16.8	45.0	34.5	33.5
	Annual 98 th %-ile	21.3	20.0	18.3	19.7	23.7	20.5	15.9	16.1	21.9	18.5
	3 year 98 th %-ile	---	---	20	19	21	21	20	18	18	19
Florence*	Annual mean	---	---	---	---	---	5.8	4.3	3.8	4.2	3.9
	Highest 24-hour	---	---	---	---	---	15.3	20.7	10.2	14.7	14.4
	Annual 98 th %-ile	---	---	---	---	---	12.2	10.8	7.0	11.6	9.4
	3 year 98 th %-ile	---	---	---	---	---	---	---	10	10	9
Hwy 99 - Four Corners	Annual mean	7.2	8.0	5.7	7.2	8.4	8.0	6.9	6.3	7.9	7.4
	Highest 24-hour	43.6	56.4	18.0	46.8	45.6	30.9	31.2	31.5	41.5	35.4
	Annual 98 th %-ile	30.5	25.4	15.5	32.4	31.8	28.9	22.6	17.2	26.7	28.1
	3 year 98 th %-ile	---	32	24	24	27	31	28	23	22	24
Springfield City Hall*	Annual mean	6.4	6.3	4.7	6.2	6.1	6.6	5.7	5.9	5.0	4.5
	Highest 24-hour	35.6	54.0	10.4	27.9	18.2	21.0	24.2	22.3	26.7	27.6
	Annual 98 th %-ile	14.2	13.3	9.4	20.5	18.1	19.7	15.2	15.9	16.9	17.8
	3 year 98 th %-ile	14	14	12	14	16	19	18	17	16	17
Oakridge	Annual mean	10.0	8.9	6.7	8.8	8.5	9.2	8.8	6.1	7.8	7.5
	Highest 24-hour	46.1	39.3	30.7	41.6	35.3	42.0	38.5	23.2	34.9	38.6
	Annual 98 th %-ile	41.1	28.9	21.7	35.7	28.6	36.7	26.3	16.9	24.3	23.5
	3 year 98 th %-ile	40	37	31	29	29	34	31	27	23	22
Wilkes*	Annual mean	---	9.8	8.6	6.8	7.3	8.5	7.1	5.0	5.9	4.8
	Highest 24-hour	---	40.6	32.2	39.0	41.4	29.9	32.6	23.3	41.8	25.5
	Annual 98 th %-ile	---	20.4	17.8	27.4	28.0	22.7	19.8	13.8	23.0	17.3
	3 year 98 th %-ile	---	---	---	22	24	26	24	19	19	18

*non-reference method sampler, if levels approach the NAAQS, reference method sampler will be installed.



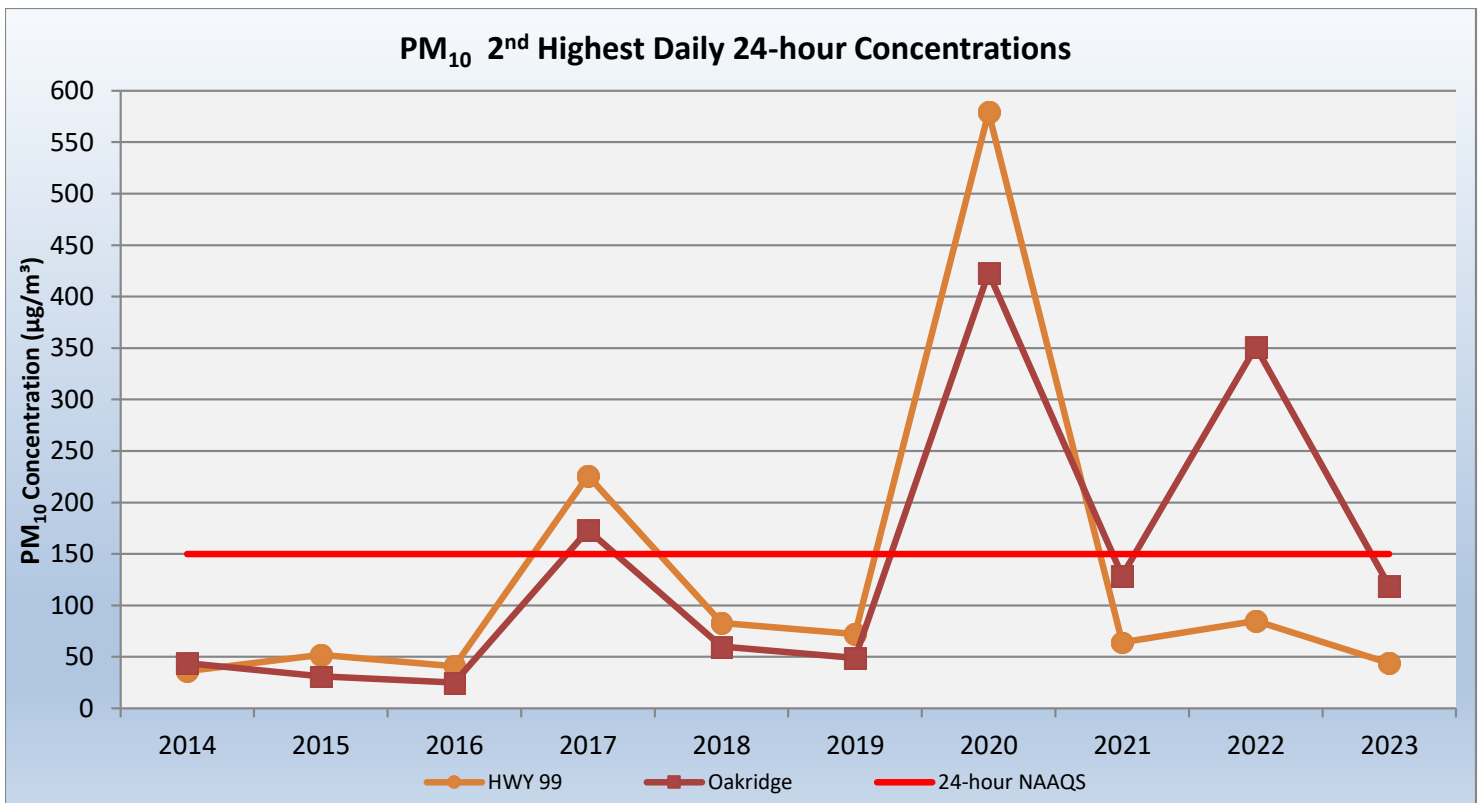
PARTICULATE MATTER DATA – PM₁₀

WILDFIRE DATA INCLUDED

EPA has designated the following National Ambient Air Quality Standards (NAAQS) for PM₁₀:

Level	Averaging Time	Description
150 µg/m ³	24-hour	Not to be exceeded more than once per year on average over 3 years.

PM ₁₀ Levels 2014 - 2023 (µg/m ³)											
Site Name		2014	2015	2016	2017	2018	2019	2020	2021	2022	2023
Hwy 99	Highest 24-hour	42	96	56	239	134	77	587	66	86	59
	2 nd Highest 24-hour	36	52	41	226	83	72	579	64	85	44
	Exceedances	0.0	0.0	0.0	3.0	0.0	0.0	10.1	0.0	0.0	0.0
	3yr Avg. of Exceedances	0.0	0.0	0.0	1.0	1.0	1.0	3.4	3.4	3.4	0.0
Oakridge	Highest 24-hour	51	37	30	210	76	53	591	157	363	142
	2 nd Highest 24-hour	44	31	25	173	60	49	423	129	351	119
	Exceedances	0.0	0.0	0.0	4.3	0.0	0.0	8.1	1.0	19.9	0.0
	3yr Avg. of Exceedances	0.0	0.0	0.0	1.4	1.4	1.4	2.7	3.0	9.7	7.0



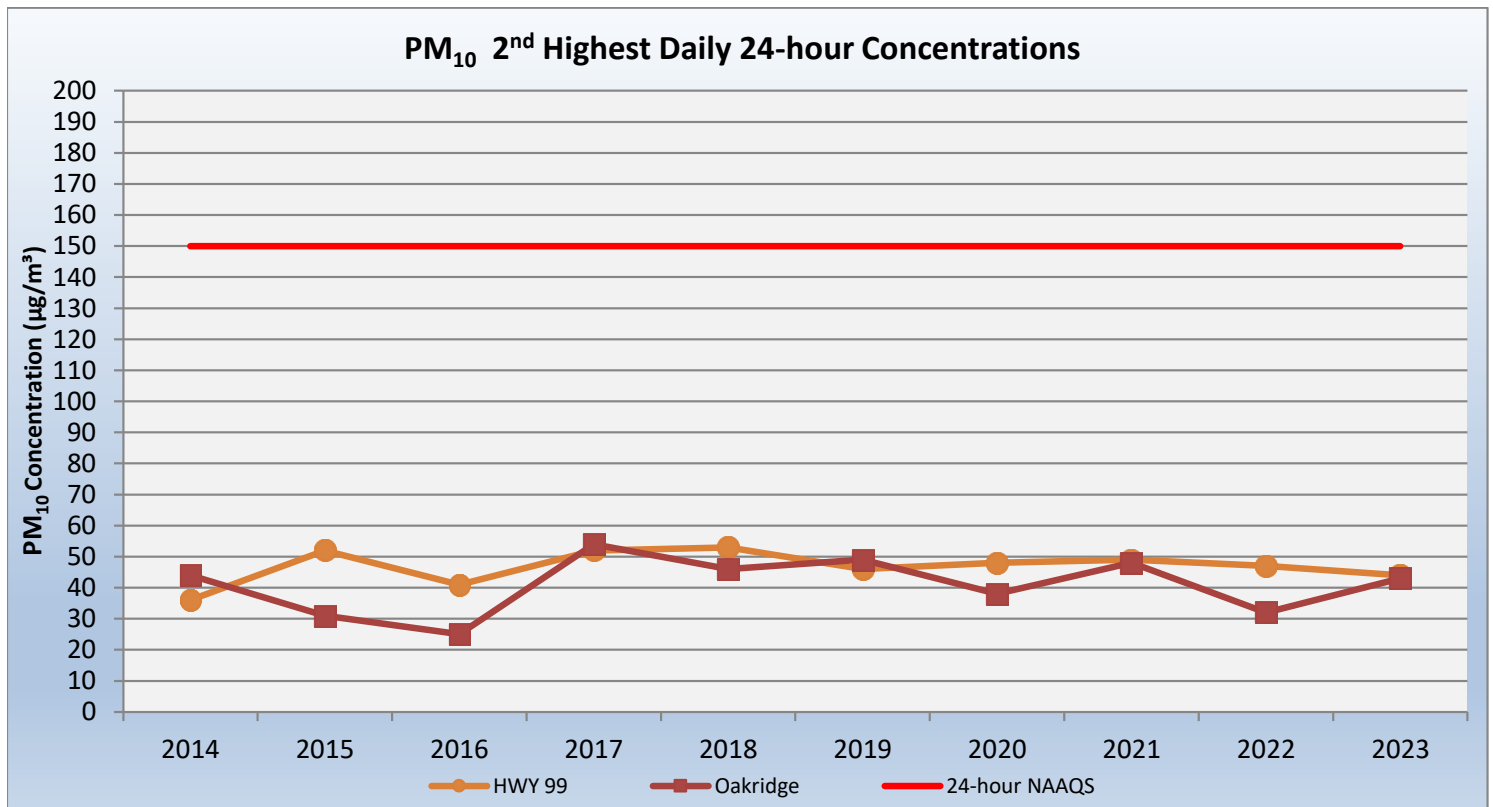
PARTICULATE MATTER DATA – PM₁₀

WILDFIRE DATA EXCLUDED

EPA has designated the following National Ambient Air Quality Standards (NAAQS) for PM₁₀:

Level	Averaging Time	Description
150 µg/m ³	24-hour	Not to be exceeded more than once per year on average over 3 years.

PM ₁₀ Levels 2014 - 2023 (µg/m ³)											
Site Name		2014	2015	2016	2017	2018	2019	2020	2021	2022	2023
Hwy 99	Highest 24-hour	42	96	56	69	59	77	59	49	49	59
	2 nd Highest 24-hour	36	52	41	58	58	72	57	49	47	44
	Exceedances	0.0	0.0	0.0	0.0	0.0	0.0	0.0	0.0	0.0	0.0
	3yr Avg. of Exceedances	0.0	0.0	0.0	0.0	0.0	0.0	0.0	0.0	0.0	0.0
Oakridge	Highest 24-hour	51	37	30	96	76	53	98	49	35	43
	2 nd Highest 24-hour	44	31	25	84	60	49	48	48	32	43
	Exceedances	0.0	0.0	0.0	0.0	0.0	0.0	0.0	0.0	0.0	0.0
	3yr Avg. of Exceedances	0.0	0.0	0.0	0.0	0.0	0.0	0.0	0.0	0.0	0.0





LRAPA
Lane Regional Air Protection Agency

Lane Regional Air Protection Agency
2023 Annual Report